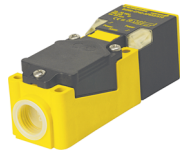


Inductive Rectangular Sensors



| Housing Style - Rectangular | Part Number | ID Number | Features | Embeddable | Sensing Range (mm) | Output |
|---|-----------------------|-----------|------------------|------------|--------------------|--------------|
| CP40 - Embeddable/Nonembeddable, Terminal Chamber | Bi15-CP40-VN4X2/S109 | M1526900 | Time Delay | • | 15 | 4-Wire NPN |
| | Ni20-CP40-VN4X2/S109 | M1527100 | Time Delay | | 20 | |
| | Bi15-CP40-VP4X2/S109 | M1504721 | Time Delay | • | 15 | 4-Wire PNP |
| | Ni30-CP40-VP4X2/S109 | M1512521 | Time Delay | | 30 | |
| | Bi15-CP40-VN4X2/S110 | M1527000 | Time Delay | • | 15 | 4-Wire NPN |
| | Ni20-CP40-VN4X2/S110 | M1527300 | Time Delay | | 20 | |
| | Bi15-CP40-VP4X2/S110 | M1509821 | Time Delay | • | 15 | 4-Wire PNP |
| | Ni20-CP40-VP4X2/S110 | M1509921 | Time Delay | | 20 | |
| | Bi15-CP40-FDZ30X2 | M4224100 | Prog. Outputs | • | 15 | 2-Wire AC/DC |
| | Bi15-CP40-FDZ30X2/S34 | M4226100 | WFI | • | 15 | |
| | Bi15-CP40-FDZ30X2/S97 | M4226600 | Low Temp. -40°C | • | 15 | |
| | Bi15U-CP40-FDZ30X2 | M4280601 | Uprox | • | 15 | |
| | Ni20-CP40-FDZ30X2 | M4224200 | Prog. Outputs | | 20 | |
| | Ni35-CP40-FDZ30X2 | M4224500 | Prog. Outputs | | 35 | |
| | Ni40U-CP40-FDZ30X2 | M4280801 | Uprox | | 40 | |
| | Bi15-CP40-FZ3X2 | M1341000 | Prog. Outputs | • | 15 | |
| | Bi15-CP40-FZ3X2/S97 | M1341010 | Low Temp. -40°C | • | 15 | |
| | Bi15-CP40-FZ3X2/S100 | M1377600 | High Temp. 100°C | • | 15 | |
| | Ni20-CP40-FZ3X2 | M1341100 | Prog. Outputs | | 20 | |
| | Ni20-CP40-FZ3X2/S100 | M1377500 | High Temp. 100°C | | 20 | |
| | Ni35-CP40-FZ3X2 | M1341300 | Prog. Outputs | | 35 | |
| | Ni40-CP40-FZ3X2/S100 | M1374802 | High Temp. 100°C | | 40 | 2-Wire AC |
| | Bi15-CP40-FZ3X2/S109 | M1373700 | Time Delay | • | 15 | |
| | Bi15-CP40-FZ3X2/S110 | M1373500 | Time Delay | • | 15 | |
| | Ni20-CP40-FZ3X2/S109 | M1374500 | Time Delay | | 20 | |
| | Ni20-CP40-FZ3X2/S110 | M1374600 | Time Delay | | 20 | |
| | Ni30-CP40-FZ3X2/S109 | M1374700 | Time Delay | | 30 | |
| | Ni30-CP40-FZ3X2/S110 | M1374400 | Time Delay | | 30 | 4-Wire AC/DC |
| | Bi15-CP40-VDZ3X2 | M4222700 | Comp. Outputs | • | 15 | |
| | Bi15-CP40-Y1X | M1012000 | | • | 15 | NAMUR |
| | Ni20-CP40-Y1X | M1012100 | | | 20 | |

WFI = Weld-Field Immune Sensors.

"/S109" Designates on Delay.

"/S110" Designates off Delay.

For detailed sensor specifications see Section M.
Normally Closed versions available upon request, consult factory.



| Voltage | Switching Freq. (Hz) | Operating Current (mA) | Operating Temp. (°C) | Protection | Housing | Front Cap/Face | Power LED | Output LED | Mating Cord/ Cable Length/Jacket | Wiring Diagram # | Wiring Diagrams |
|--------------------------|----------------------|------------------------|----------------------|------------|---------|----------------|-----------|------------|----------------------------------|------------------|----------------------|
| 10-65 VDC | - - | ≤200 | -25 to +70 | IP 67 | PBT | PBT | GN | YE | - - - - | 1 | Diagram 1 |
| | - - | ≤200 | -25 to +70 | IP 67 | PBT | PBT | GN | YE | - - - - | 1 | |
| 10-65 VDC | - - | ≤200 | -25 to +70 | IP 67 | PBT | PBT | GN | YE | - - - - | 2 | Diagram 2 |
| | - - | ≤200 | -25 to +70 | IP 67 | PBT | PBT | GN | YE | - - - - | 2 | |
| 10-65 VDC | - - | ≤200 | -25 to +70 | IP 67 | PBT | PBT | GN | YE | - - - - | 1 | Diagram 3 |
| | - - | ≤200 | -25 to +70 | IP 67 | PBT | PBT | GN | YE | - - - - | 1 | |
| 10-300 VDC 20-250 VAC | 60 | ≤400/300 | -25 to +70 | IP 67 | PBT | PBT | GN | YE | - - - - | 3 | Diagram 4 |
| | 30 | ≤400/300 | -25 to +70 | IP 67 | PBT | PBT | GN | YE | - - - - | 3 | |
| | 60 | ≤400/300 | -40 to +70 | IP 67 | PBT | PBT | GN | YE | - - - - | 3 | |
| | 60 | ≤400/300 | -30 to +85 | IP 67 | PBT | PBT | GN | YE | - - - - | 3 | |
| | 60 | ≤400/300 | -25 to +70 | IP 67 | PBT | PBT | GN | YE | - - - - | 3 | |
| | 60 | ≤400/300 | -25 to +70 | IP 67 | PBT | PBT | GN | YE | - - - - | 3 | |
| 10-300 VDC 20-250 VAC | 20 | ≤400/300 | -25 to +70 | IP 67 | PBT | PBT | GN | YE | - - - - | 3 | Diagram 5 |
| | 20 | ≤400/300 | -40 to +70 | IP 67 | PBT | PBT | GN | YE | - - - - | 3 | |
| | 20 | ≤400/300 | -25 to +100 | IP 67 | PBT | PBT | GN | YE | - - - - | 3 | |
| | 20 | ≤400/300 | -25 to +70 | IP 67 | PBT | PBT | GN | YE | - - - - | 3 | |
| | 20 | ≤400/300 | -25 to +100 | IP 67 | PBT | PBT | GN | YE | - - - - | 3 | |
| | 20 | ≤400/300 | -25 to +70 | IP 67 | PBT | PBT | GN | YE | - - - - | 3 | |
| | 20 | ≤400/300 | -25 to +100 | IP 67 | PBT | PBT | GN | YE | - - - - | 3 | |
| 20-250 VAC | 20 | ≤400/300 | -25 to +70 | IP 67 | PBT | PBT | GN | YE | - - - - | 3 | Diagram 6 |
| | 20 | ≤400/300 | -25 to +70 | IP 67 | PBT | PBT | GN | YE | - - - - | 3 | |
| | 20 | ≤400/300 | -25 to +70 | IP 67 | PBT | PBT | GN | YE | - - - - | 3 | |
| | 20 | ≤400/300 | -25 to +70 | IP 67 | PBT | PBT | GN | YE | - - - - | 3 | |
| | 20 | ≤400/300 | -25 to +70 | IP 67 | PBT | PBT | GN | YE | - - - - | 3 | |
| | 20 | ≤400/300 | -25 to +70 | IP 67 | PBT | PBT | GN | YE | - - - - | 3 | |
| 20-250 VAC 20-320 VDC | 30 | ≤400/300 | -25 to +70 | IP 67 | PBT | PBT | GN | YE | - - - - | 4 | |
| 5-30 VDC | 150 | Remote | -25 to +70 | IP 67 | PBT | PBT | N/A | YE | - - - - | 5 | |
| | 150 | Remote | -25 to +70 | IP 67 | PBT | PBT | N/A | YE | - - - - | 5 | |

For material descriptions see page M36.